



Topic: 1.3.4 Output devices

Oct/Nov 2006 P1 (7010)

15 In a school, students can use laptop computers which link to the school's wireless network.

(a) State two advantages to students of using this system rather than desktop computers located in specialist computer laboratories. [2]

(b) Give two disadvantages of using laptop computers rather than using desktop computers. [2]

May/June 2010 P11 (7010)

6 (a) Give three different types of device that allow human beings to interface with computers systems. [3]

May/June 2010 P12 (7010)

9 A factory uses a computer system to store information about customers, spare parts and general administration.

(b) The factory needs to buy a new printer. It has decided to buy either a dot matrix printer or an inkjet printer. Discuss the advantages and disadvantages of using both types of printer in this application. [3]

May/June 2011. P12 (9691)

1. (a) Define the terms:
(i) hardware
(ii) software [2]

May/June 2011. P13 (9691)

1. (a) Define the terms:
(i) input device
(ii) storage device [2]

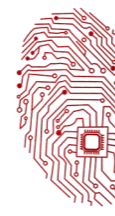
Oct/NOV 2011. P13 (9691)

1 (a) Describe the purpose of the following:
(i) Input devices;
(ii) Output devices. [2]

Oct/Nov 2011 P13 (7010)

2 The following table shows three applications which require specialist output devices. For each application, suggest one possible output device and give a reason for your choice.



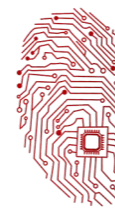


Topic: 1.3.4 Output devices

Application	Output device	Reason for choice of device
A visually impaired person using a word processor		
Using CAD to design a new engine		
Monitoring a house for burglars		

[6]





Topic: 1.3.4 Output devices

May/June 2012. P12 (7010)

4 A list of four printers and four different applications which use printers is shown below.

(a) Using arrows, link each printer to the most appropriate application.

Printing documents in a factory environment which is dusty and damp	3D printer
High quality printing of 30 000 colour booklets per day	Dot matrix printer
Producing prototypes in resin of a new design	Colour inkjet printer
Producing a colour poster	Colour laser printer

[4]

(b) Give one feature of each printer which makes it appropriate for the application.

3D printer

Dot matrix printer

Colour inkjet printer

Colour laser printer

[4]

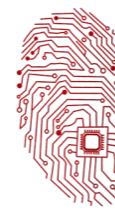
May/June 2012. P11/12 (9691)

- 1 (c) A local hockey league is run by a secretary from home. The secretary is Responsible for all fixtures and league tables. The secretary is blind and uses her home computer for carrying out the Necessary tasks. State a suitable hardware peripheral for each of input, output and storage, which these secretary could use. Justify your choices.

[4]

Oct/NOV 2012. P11 (9691)





Topic: 1.3.4 Output devices

- 8(a)** An interactive information system is being designed for use in the terminal building of an airport.
- (ii) State an output device which would be suitable for use in this application. Justify your choice. **[2]**

Oct/NOV 2012. P12 (7010)

3 For each of the following five groups of hardware items, write down a computer application that would need those items.

List of hardware items	Application
webcam, microphone, speakers	
barcode reader, POS terminal	
pressure sensor, ADC, lights, siren	
data gloves, data goggles	
light pen, plotter, 3D printer	

[5]

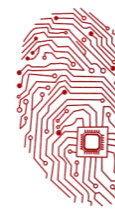
Oct/NOV 2012. P12 (9691)

- 1** (a) (i) Define what is meant by hardware. **[1]**
(ii) Define an input device and state why it is needed. **[3]**
- 8** A pocket sized game system is based around a microprocessor.
- (a) (ii) State an output device which would be suitable for use in this application. Justify your choice. **[2]**

Oct/NOV 2012. P13 (9691)

- 1** (a) (i) Define what is meant by hardware. **[1]**
(ii) Define an output device and state why it is needed. **[3]**
- (c) The barcodes of goods are read at the checkouts. Describe barcodes and explain how they are read at the checkouts and used by the computer system. **[6]**





Topic: 1.3.4 Output devices

8 An interactive information system is being designed for use by the air-traffic controllers at an airport. Information about all planes must be available to the controllers who then ensure that the planes stay far enough apart not to be a danger to each other.

(a)

- (ii) State an output device which would be suitable for use in this application. Justify your choice. **[2]**

Oct/Nov 2012 P13 (7010)

10 You have just been appointed as the IT representative of a small engineering company. The company needs to buy:

- external backing storage
- printers

Choose a suitable example for each and give a reason for your choice.

May/June 2013. P11/P12 (9691)

6 A large company has four separate departments. The following table describes each department and shows tasks that involve a computer system.

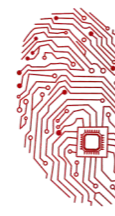
	DEPARTMENT	TASKS
(i)	Production - The factory where products are manufactured	Produce quality control stickers to place them on finished items
(ii)	Design Office - Where new products are designed	Produce and present prototypes of new models
(iii)	Marketing	Answer customer queries and produce sales brochures
(iv)	Finance - Wages and salaries department	Produce wage/salary slips each month

(a) Describe, with a reason, a suitable output device which could be used in each of the four departments. Your devices should be different.

- (i) Production
(ii) Design Office
(iii) Marketing
(iv) Finance

[8]



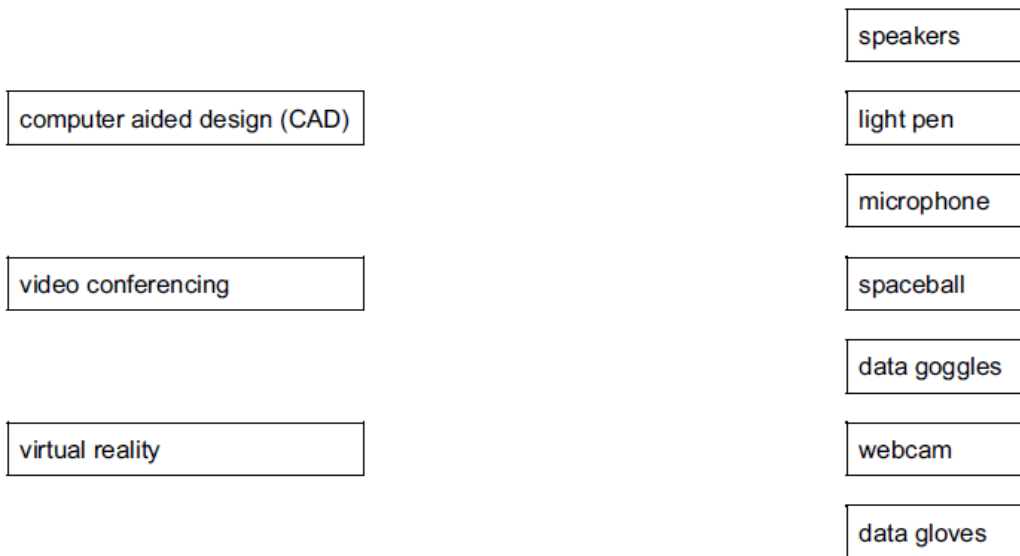


Topic: 1.3.4 Output devices

Oct/Nov 2013 P12(7010)

4 (a) Seven hardware items are shown on the right hand side in the diagram below. Three applications are shown on the left in the diagram.

By drawing arrows, link each application to the appropriate hardware items (each hardware item must be used once only):



[3]

May/June 2015 P11 (2210)

8(d) The LCD (liquid crystal display) on the clock face is back-lit using blue LEDs (light emitting diodes). The brightness of the clock face is determined by the level of light in the room. The amount of light given out by the LEDs is controlled by a control circuit.

Describe how the sensor, microprocessor and LEDs are used to maintain the correct brightness of the clock face. [3]

(e) Modern LCD monitors and televisions use LED back-lit technology.

Give **two** advantages of using this new technology compared to the older cold cathode fluorescent lamp (CCFL) method. [2]

Oct/ Nov 2015 P12 (2210)

8 The steps to print a document using a laser printer are shown in the table below. Put each step in the correct order. The first step has been done for you.





Topic: 1.3.4 Output devices

Step	Order
As the printing drum rotates, a laser scans across it; this removes the positive charge in certain areas	
The printing drum is coated in positively-charged toner; this then sticks to the negatively-charged parts of the printing drum	
The paper goes through a fuser which melts the toner so it fixes permanently to the paper	
The printer driver ensures that the data is in a format that the laser printer can understand	1
A negatively-charged sheet of paper is then rolled over the printing drum	
Data is then sent to the laser printer and stored temporarily in the printer buffer	
The toner on the printing drum is now transferred to the paper to reproduce the required text and images	
The printing drum is given a positive charge	
Negatively-charged areas are then produced on the printing drum; these match exactly with the text and images to be printed	

[8]

Oct/Nov 2015 P13 (2210)

7 Name a suitable output device for each of the following applications. A different device should be used for each application.

Application	Suitable output device
Production of one-off photographs of very good quality
High volume colour printing of advertising flyers
Production of an object, which is built up layer by layer; used in CAD applications
Converting electrical signals into sound
Showing enlarged computer output on a wall or large screen

[5]





Topic: 1.3.4 Output devices

May/June 2016 P11 (2210)

4 (b) State **one** suitable application for **each** printer below. A different application must be given for each printer.

Inkjet printer

3D printer

[2]

(c) Name another type of printer and describe **one** way in which it is different from the printers named in **part (b)**.

Give an application for this printer.

[3]

May/June 2016 P12 (2210)

5 Six descriptions and **six** devices are shown below.

Draw a line to link each description to the correct device.

Description	Device
Allows a user to write on a surface using a pen; text and drawings are then captured electronically and stored for later use.	Digital Light Projector
Converts sound into an electrical signal/voltage.	Inkjet printer
Uses thermal bubble and piezoelectric technology to produce a hard copy.	Interactive whiteboard
Uses a bright white light source and micro mirrors (on a chip) to produce an image to be shone onto a wall or screen.	Laser printer
Converts a hard copy document into an electronic form to be stored as a file on a computer.	Microphone
Uses negatively charged images on a rotating drum and positively charged toner to output a hard copy.	Scanner (2D)

[6]





Topic: 1.3.4 Output devices

May/June 2016 P13 (2210)

7 Modern Liquid Crystal Display (LCD) monitors use Light-Emitting Diode (LED) backlit technology. Give **four** benefits of using LED technology. [4]

May/June 2017 P11 (2210)

9 A supermarket has a system that allows customers to check out their own shopping. Identify and describe the purpose of **two** input devices and **one** output device used in this system. [6]

May/June 2017 P12 (2210)

3 The diagram shows **five** output devices and **five** descriptions. Draw a line between each output device and its description.

Output Device	Description
Inkjet printer	Flat panel display that uses the light modulating properties of liquid crystals.
LCD screen	Flat panel display that uses an array of light-emitting diodes as pixels.
2D cutter	Droplets of ink are propelled onto paper.
LED screen	Electrically charged powdered ink is transferred onto paper.
Laser printer	High powered laser that uses the x-y plane.

[4]

