

3.5.4 Malware

Computer Science (9608)

May/June 2015.P31/P32

2 The incomplete table below shows descriptions and terms relating to malware.

(a) Complete the table with appropriate descriptions and terms.

	Description	Term
A	Unsolicited emails containing advertising material sent to a distribution list.
B	A standalone piece of malicious software that can reproduce itself automatically.
C	Pharming
D	Phishing

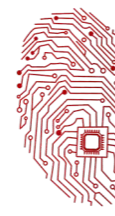
[4]

(b) For one of the terms, describe:

- a problem that might arise for a user
- a possible solution to the problem Choose between the terms:
A / B (circle your choice)

[2]





3.5.4 Malware

May/June 2015.P33

3 The incomplete table below shows descriptions and terms relating to malware.

(a) Complete the table with appropriate descriptions and terms.

	Description	Term
A	Sending emails which contain a link to a website that attempts to trick users into giving confidential personal data.
B	It replicates by inserting itself into another piece of software.
C	Worm
D	Spam

[4]

(b) Choose term A or term B and describe:

- a problem that might arise for a user
- a possible solution to the problem

Term

[2]

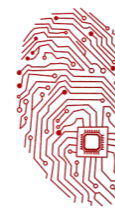
May/June 2018.P31/P33

6 A company specialises in educational software.

(a) The company is concerned that malware might disrupt their business.

(i) Add appropriate descriptions and terms in the table.





3.5.4 Malware

	Description	Term
A	Redirection to a bogus website that appears to be legitimate to gain confidential data.
B	Use email to attempt to gain a user's confidential data.
C	Spyware
D	Worm

[4]

(ii) A member of staff is using the Internet to carry out research. They are worried about the threat from terms **A** and **B**.

Identify **one** solution to the each of the threats.

[2]

(b) A customer downloads a new educational software package from the company.

Explain how the customer's and the company's computers use a hashing algorithm to assure the customer that:

- the software has come from the company (is authentic) and
- no one has altered it.

[4]

